

# NetScreen-Global PRO Security Management Systems



**NETSCREEN®**  
Scalable Security Solutions



## At a glance

- **Centralized firewall and VPN policy management**

*Lower security administration costs and minimize configuration errors through centralized definition and deployment of firewall and VPN policies*

- **Scalability**

*Manage security device networks of all sizes, from ten to tens of thousands of devices*

- **Centralized management of NetScreen-Remote Clients**

*Define and deploy VPN security policies to thousands of remote users from a centralized location*

- **Powerful real-time and historical reporting capabilities**

*Gain insight into usage trends, performance baselines and proactively monitor security events*

- **Distributed, open architecture**

*Easily integrate with other fault management, billing, and reporting applications*

## NetScreen security management products overview

As enterprises and service providers deploy more and more security devices throughout their networks, the process of individual device configuration can cause an exponential increase in IT manpower consumption and associated costs. In addition, individual device configuration can lead to inconsistent policies across the network, opening potential security holes.

The NetScreen-Global PRO product line provides enterprises and service providers with a centralized management platform that minimizes the administrative effort of security devices and eliminates potential inconsistencies associated with individual firewall and VPN policy definition and deployment. Using the NetScreen-Global PRO solution, security administrators can monitor device performance and status, manage configurations, and collect usage information for accounting or bill back purposes.

The NetScreen-Global PRO product line not only provides a centralized platform for managing hundreds or even thousands of NetScreen security devices, it also allows administrators to control the NetScreen-Remote VPN client access policies and configurations. The NetScreen-Global PRO product line includes easy-to-use and intuitive policy management capabilities that allows an administrator to quickly create and deploy firewall and VPN policies. For those

organizations that have a large and/or distributed administrative staff, the NetScreen-Global PRO product line provides the ability to delegate administrative roles in a secure manner, greatly reducing administrative costs while increasing overall policy control.

Once the devices are properly configured, an administrator's job is only partially complete—the task of device and performance monitoring and reporting still needs to be addressed. The NetScreen-Global PRO line provides security administrators with critical fault and performance monitoring and reporting capabilities. A wide range of informative real-time and historical reports can be generated to gain critical insight into usage trends, performance baselines, Service Level Agreement (SLA) parameters, and security events for NetScreen integrated security solution deployments.

The NetScreen-Global PRO product line is comprised of two products—NetScreen-Global PRO and NetScreen-Global PRO Express. NetScreen-Global PRO is ideal for managing large enterprise or service provider deployments of up to ten thousand devices while NetScreen-Global PRO Express can manage up to one hundred NetScreen devices. NetScreen-Global PRO includes two components, the Policy Manager and the Report Manager. The Policy Manager is a centralized policy configuration system that is pre-installed on a rack-mountable server. The

Report Manager is a software component that provides highly scalable monitoring and reporting capabilities.

Sharing virtually all of the same policy management and administration features, NetScreen-Global PRO Express is delivered with Policy Manager and Real-time Monitor, a subset of Report Manager, on a pre-configured server. Whether it's a deployment of twenty-five devices to connect remote sites to a central office or a multi-thousand-device rollout by a service provider across multiple customers, NetScreen has a management solution to match your specific needs.

### Policy management

NetScreen-Global PRO provides centralized firewall and VPN configuration management capabilities that allow NetScreen customers to efficiently distribute hundreds or even thousands of policies to NetScreen devices, device groups, and NetScreen-Remote clients.

The NetScreen-Global PRO line provides the flexibility to create and deploy firewall and VPN policies rapidly through an easy-to-use and intuitive policy management user interface. The NetScreen-Global PRO Policy Manager (Policy Manager) allows the administrator to define global policies once and then reuse these policies across multiple devices or device groups. New devices added to a device group will automatically inherit all the associated policies for that group, eliminating the need for any manual device configuration beyond basic device information. The Policy Manager's ease of use and flexibility enables administrators to be more productive by allowing them to quickly perform device setup and configuration through an intuitive user interface. These and other ease-of-use features enable administrators to:

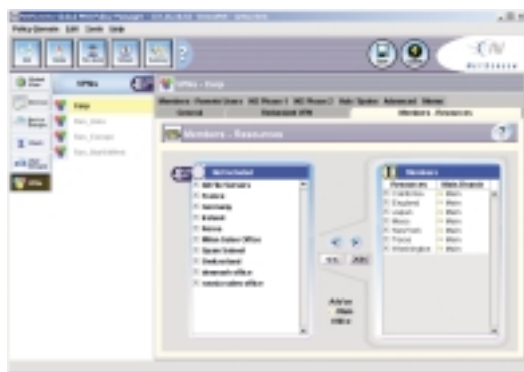
- Assemble full-mesh, hub-and-spoke, main-and-branch, or point-to-point VPNs
- Define and deploy global firewall access filters and firewall attack protections
- Perform centralized definition, deployment and control of client VPN policies
- Easily and rapidly deploy common security zone parameters
- Maintain management connectivity with dynamically addressed NetScreen devices
- Execute back-up and restore of configuration domains
- Update ScreenOS Firmware and license keys from a centralized location

The benefits of Global PRO Policy Manager can help minimize configuration errors to assure rapid and accurate configuration of large-scale firewall and VPN deployments resulting in a lower total cost of ownership.

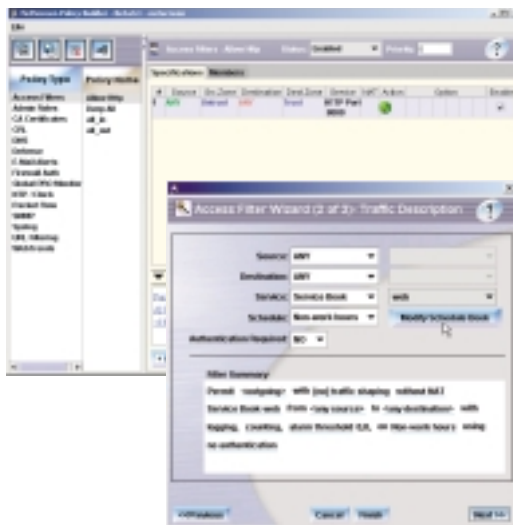
### NetScreen-Remote Client Management

Another major network security challenge facing today's security administrator is the distribution of VPN policies to remote access users. NetScreen-Global PRO clears the path to wide-scale remote access deployments with powerful centralized management of NetScreen-Remote clients. An administrator can easily create remote VPN access policies for individual or even thousands of NetScreen-Remote clients in a matter of minutes.

A single process generates the client-side VPN configurations as well as the corresponding central VPN gateway configurations, which not only saves time, but also reduces the possibility of configuration errors. Best of all, the distribution of client policies is effortless, with no need to



The point and click interface allows new resources to be added to a VPN in minutes.



The Wizard based policy builder makes defining policies easy. Once defined, policies can be used across multiple devices and device groups.



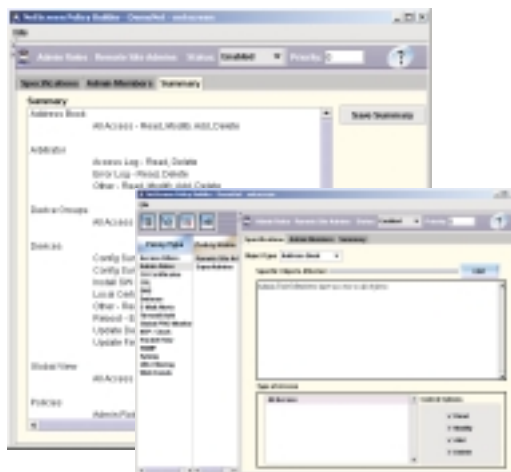
“touch every desktop.” Whenever a remote user wishes to connect to the corporate VPN, a secure session is initiated with the NetScreen-Global PRO server and the user is authenticated either locally on NetScreen-Global PRO, through a RADIUS proxy or via Xauth. Based on predefined VPN policies, user-specific settings are then securely transferred to the client machine and the user can then access their approved VPN connections.

Dynamically managing VPN clients from a “user-based” perspective has considerable advantages over traditional “machine-based” VPNs. The user-based method optionally clears any user settings from the PC once the user logs out of the remote VPN connection, thereby achieving a more secure, more controllable remote access VPN deployment.

### Flexible administration

NetScreen-Global PRO provides role-based management to allow configuration, monitoring and reporting privileges to be set with granularity. Through an intuitive console, the lead administrator can define rules for administrators, devices, systems, policy domains, and VPNs that are associated with the appropriate customer or departmental domains. The result is a powerful role-based administration system where each remote administrator is given the relevant access and rights they need in a timely manner, while allowing the central administrator to access all of the data for overall security assessments and capacity planning purposes. As with firewall and VPN policies, administrative roles can be defined once and easily assigned to multiple users and user groups.

Privileges may also be granted to a number of administrators who, in turn, may manage the



Easily define granular administrative permissions.

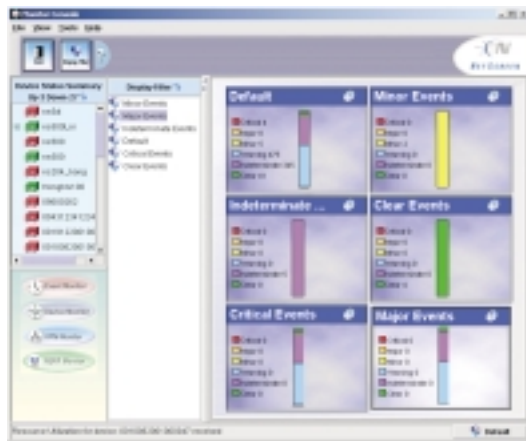
same sets of devices or users from different locations or on different shifts, allowing complete 24x7 “follow-the-sun” management. NetScreen-Global PRO includes record locking and conflict arbitration, as well as complete logs of configuration changes, to assure orderly and accountable moves, adds, and changes. Administrators can also view reports on a per-device basis or on an aggregated basis for all devices for a given customer or domain.

All information within NetScreen-Global PRO is collected from common data stores allowing service providers to supply their customers with the same feature-rich views for their specific domain that the main administrator can see, while solid internal system security ensures that data integrity is maintained for each customer.

### Monitoring, Reporting, and Log Management

NetScreen-Global PRO includes critical real-time and historical reporting capabilities for fault and performance data analysis. Real-time monitoring includes VPN and device up/down status, uptime calculations, protocol and policy usage trends, performance baselines, and security events for a large NetScreen integrated security solution deployment. All data can be stored in an external database or flat file format for easy historical analysis of data. In order to assure capture of all security events on the network, NetScreen-Global PRO has a highly scalable, redundant data collection infrastructure. Advanced features like data archiving and buffering ensure data integrity between the device and the database.

A powerful real-time alert and log filter mechanism greatly enhances the administrator’s ability to pinpoint and respond to critical events. Filters



Flexible filters allow the user to focus on relevant real-time information

can be set up through a series of flexible, intuitive filter-building screens. These filters can be tracked on a single filter status page, allowing the security operations center to have an up-to-the-minute pulse of the organization's security profile. To further manage the amount of information provided to administrators, duplicate event logs are consolidated into a single event instance accompanied by a running event count.

Combined with NetScreen-Global PRO's administrative features, massive log and report files can be easily parsed, providing the appropriate reports to each user of the system based on their specific privileges.

For service providers, NetScreen-Global PRO is subscriber-aware and can be used to generate additional revenue by providing secure, partitioned subscriber access to Service Level Management reports both as an up sell to the existing customer base as well as an offer to new clients. These customer specific reports may be re-branded to extend the identity of the service provider to the subscriber.

### Highly scalable open architecture

NetScreen-Global PRO is a highly scalable, open security management. The system is designed to configure and monitor up to ten thousand NetScreen security systems and appliances, making centralized management of large-scale deployments a reality. Furthermore, its built-in redundancy and reliability ensure the integrity and security of mission-critical alerts and performance data. With its powerful multi-tier data collection and storage infrastructure, the product can meet the demanding requirements of any high-performance security management environment. Whether an enterprise with thousands of remote offices around the world or a security service provider with multiple high-speed NetScreen security systems, the redundant Solaris™ based data collection architecture and TCP/IP-based communications infrastructure ensure that no data will be missed or lost.

For both enterprises and service providers, accurate and timely reports on performance, backed by reliable data collection and storage, are crucial. NetScreen-Global PRO supports a selection of back-end relational databases for highly efficient and reliable data storage and retrieval.

### Intelligent Log Reporting

One of the major challenges facing the security administrator is how to deal with the deluge of log and attack messages they receive on a daily basis. These messages can in fact expand exponentially when the security infrastructure is experiencing a failure or if an attack is being launched against the organization. Rather than bombarding the administrator with thousands of identical or similar messages, NetScreen-Global PRO can intelligently correlate similar messages together and provide the administrator with a single error message and a count of how often this type of event happened over a given time period. This data aggregation reduces the volume of data that must travel over the network, and more importantly that must be processed by the security administrator, while retaining the important content.



Track service levels and fine tune your security infrastructure through detailed Historical Reporting.

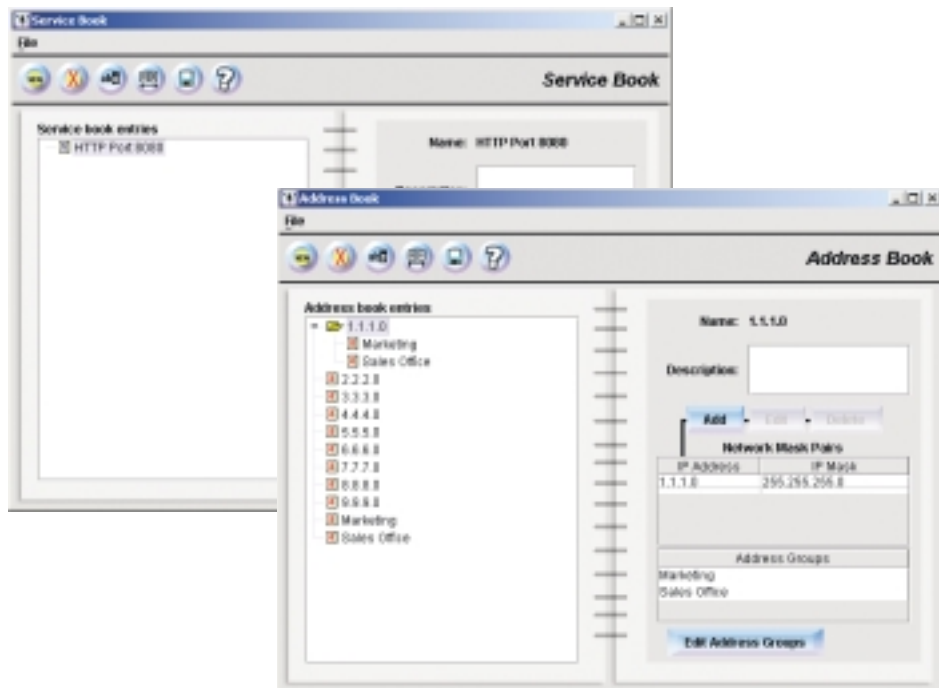
### Ease of use

NetScreen-Global PRO incorporates various key features to make the product easy to install and use. The Policy Manager components and all of the required third-party server software components (LDAP directory, web server, etc.) are delivered as a pre-configured bundle on a rack-mountable server. This server is "hardened" to allow only the protocols necessary to manage NetScreen devices to access the server. Not only does this bundle reduce the deployment time for the solution, it ensures that all of the subcomponents work well together. The installation process doesn't require hours or days of upgrading servers with various patches in order to run the management system. Just provide the Policy Manager server an IP address and you're ready to go.

All device configuration information is stored in a pre-configured LDAP directory tree on the Policy Manager server. The administrator may leverage this bundled LDAP directory or may choose to utilize an existing corporate LDAP

directory. Either way, configuration information for NetScreen devices is stored in a logical directory tree, which enables the user to take advantage of the powerful inheritance properties of LDAP to create policy hierarchies. LDAP also allows for flexible backup and restore have the database and integration of NetScreen device information with other directory-enabled devices to establish a common data store. This provides a high degree of data integrity and control for the organization's critical network and security infrastructure systems. LDAP replication can be used to provide redundant Policy Manager servers.

The Policy Manager incorporates pre-installed SSL certificates that are utilized to authenticate the Policy Manager server and encrypt traffic between the consoles and the Policy Manager server. The administrator is assured of a high level of security and integrity for their critical management data "right out of the box."



Centrally defined hierarchical address and service books allow for consistent policies across devices.

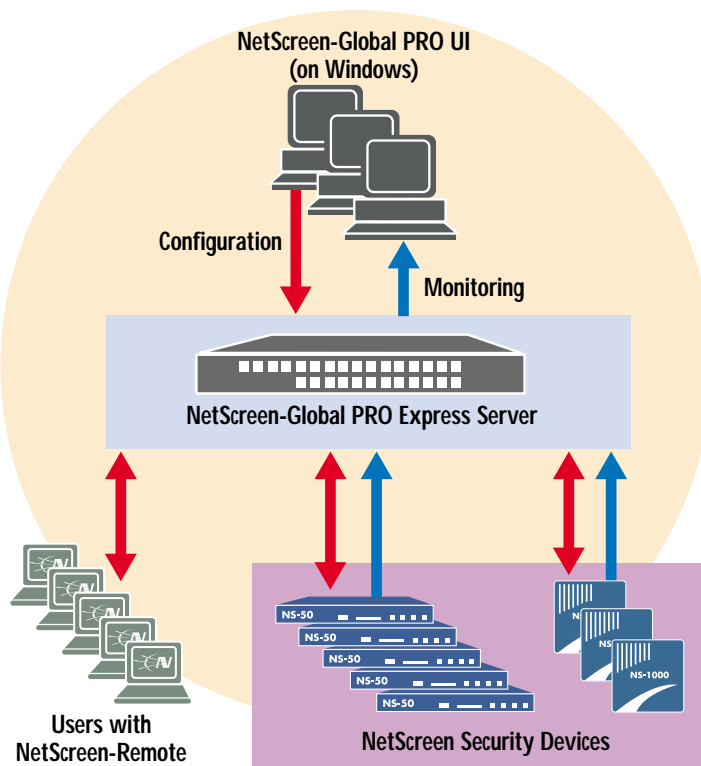
## Interoperability

Because of NetScreen's open database schema, data from the system can be easily integrated into many third party provisioning, fault management, billing, and reporting applications. This ensures that whatever "manager of managers" a service provider or enterprise customer is using, NetScreen-Global PRO can provide accurate and timely data to an existing management console. Furthermore, the product comes with out-of-the-box integration with Crystal Reports™ through a set of security-specific, web-based report templates. These templates can be freely branded and extended to create a custom look and feel to the standard reports. Finally, an add-on Micromuse™ Netcool® Integration Module forwards NetScreen data seamlessly into any Netcool console and features an advanced rule-set for data correlation and reduction to assist in root cause analysis.

## NetScreen-Global PRO Express

For enterprises or service providers with up to one hundred NetScreen devices deployed, NetScreen-Global PRO Express is an economical combination of the same powerful Policy Manager component from NetScreen-Global PRO together with Real-time Monitor, a subset of Report Manager. NetScreen-Global PRO Express offers similar flexibility for configuration management and the same views of real-time events as NetScreen-Global PRO. The core server software for NetScreen-Global PRO Express is delivered on a pre-configured server, ready to "rack and go."

NetScreen-Global PRO Express makes it easy to manage NetScreen's integrated security systems and appliances. Network managers can control security for multi-site device deployments from one location or several. This essential management application offers concurrent status monitoring of dozens of devices, graphical reporting of network activities, and policy administration for the complete line of NetScreen integrated security systems and appliances. It is a cost-effective tool that enhances productivity and network security, saving both time and money.



*NetScreen-Global PRO Express is an economical plug-and-play security management system.*

Feature	NetScreen-Global PRO	NetScreen-Global PRO Express	Feature	NetScreen-Global PRO	NetScreen-Global PRO Express
<b>Scalability</b>			<b>Reporting</b>		
Maximum devices	10,000	100	Device based	Yes	Yes
Upgradeable license tiers	Yes	No	Network activity	Yes	Yes
<b>Data collection/storage</b>			Resource utilization	Yes	Yes
Events/log data capture	Yes	Yes	Event log	Yes	Yes
Mid-tier data collectors	Yes	No	Traffic logs	Yes	Yes
Relational database support	Yes	No	Real-time event filtering	Yes	Yes
Flat file data storage	Yes	No	Role-based admin	Yes	Yes
<b>Configuration</b>			Protocol distribution	Yes	Yes
Storage of configuration templates	Yes	Yes	Ethernet statistics	Yes	Yes
Common policy parameters applied to groups	Yes	Yes	Flow statistics	Yes	Yes
Role-based administration	Yes	Yes	Active authenticated users/admin	Yes	Yes
NetScreen-Remote client management	Yes	Yes	Policy distribution	Yes	Yes
Administrative parameters	Yes	Yes	VPN monitoring	Yes	Yes
Interface parameters	Yes	Yes	NSRP/HA monitoring	Yes	Yes
Policy parameters	Yes	Yes	Bandwidth utilization	Yes	Yes
VPN parameters	Yes	Yes	Customer based	Yes	No
Virtual IP parameters	Yes	Yes	Historical reports	Yes	No
Address	Yes	Yes	Customizable/extensible Crystal Report templates	Yes	No
Services	Yes	Yes	Re-brandable report GUI	Yes	No
Schedule	Yes	Yes	Log correlation/data reduction	Yes	No
Users	Yes	Yes	Analysis reports for events and logs	Yes	No
<b>Interoperability</b>					
LDAP	Yes	Yes			
Open database schema	Yes	No			
Oracle®	Yes	No			
PostgreSQL	Yes	No			
Microsoft® SQL Server 2000	Yes	No			
Netcool® integration	Yes	No			
Telalert® integration	Yes	No			
<b>Devices supported</b>					
NetScreen-5	Yes	Yes			
NetScreen-5XP	Yes	Yes			
NetScreen-5XT	Yes	Yes			
NetScreen-10	Yes	Yes			
NetScreen-25	Yes	Yes			
NetScreen-50	Yes	Yes			
NetScreen-100	Yes	Yes			
NetScreen-204	Yes	Yes			
NetScreen-208	Yes	Yes			
NetScreen-500	Yes	Yes			
NetScreen-1000	Yes	Yes			
NetScreen-5200	Yes	Yes			

# Specifications and Ordering Information

## Specifications:

### Minimum System Requirements:

#### NetScreen-Global PRO

Works with NetScreen-1000, NetScreen-100, NetScreen-10, and NetScreen-5 (requires NetScreen ScreenOS software version 2.6 or later); NetScreen-500 and NetScreen-5XP (requires NetScreen ScreenOS software version 2.6.1 or later); NetScreen-50 and NetScreen-25 (requires NetScreen ScreenOS software version 3.0 or later); NetScreen-Remote (requires version 7.0 or later); NetScreen-5XT (requires NetScreen ScreenOS software version 3.0.3 or later); NetScreen-204, NetScreen-208, and NetScreen-5200 (requires NetScreen ScreenOS software version 3.1 or later). User defines zone support on ScreenOS 3.1 is for 3 zones only (Trust, Untrust, and DMZ).

The Policy Manager component of NetScreen-Global PRO 3.0 is delivered on a Sun Netra™ T1 server with a 500 MHz processor, 512 MB RAM, and 18 GB SCSI hot-swappable hard drive.

#### Solaris server for Report Manager components:

- Ultra 10 Workstation™ running Solaris 8
- 400 MHz
- 256 MB of RAM
- 18 GB available disk space
- Ethernet adapter
- TCP/IP

#### Windows server for console:

IBM® compatible PC running the Windows NT® Workstation/Server 4.0, Service Pack 6 or higher or Windows® 2000 Server, Advanced Server, or Professional editions.

- Minimum 400 MHz, recommended 700 MHz Pentium® II or equivalent
- Minimum 192 MB, recommended 256 MB RAM
- Ethernet adapter
- TCP/IP

### Other third party software requirements:

Crystal Reports Developer Edition, version 8 or 8.5 (only required if using Crystal Report templates)

Microsoft® Internet Explorer 5.x (only required if using Crystal Report templates)

Microsoft Internet Information Server (only required if using Crystal Report templates)

Commercial Database Options

Microsoft SQL Server 2000

Oracle Database Standard Edition, version 8.1.6 or later

#### NetScreen-Global PRO Express

Works with NetScreen-1000, NetScreen-100, NetScreen-10, and NetScreen-5 (requires NetScreen ScreenOS software version 2.6 or later); NetScreen-500 and NetScreen-5XP (requires NetScreen ScreenOS software version 2.6.1 or later); NetScreen-50 and NetScreen-25 (requires NetScreen ScreenOS software version 3.0 or later); NetScreen-Remote (requires version 7.0 or later); NetScreen-5XT (requires NetScreen ScreenOS software version 3.0.3 or later); NetScreen-204, NetScreen-208, and NetScreen-5200 (requires NetScreen ScreenOS software version 3.1 or later). User defines zone support on ScreenOS 3.1 is for 3 zones only (Trust, Untrust, and DMZ).

The Policy Manager component of NetScreen-Global PRO Express (for up to 100 devices) is delivered on a Sun Netra T1 server with a 500 MHz processor, 512 MB RAM, and 18 GB SCSI hot-swappable hard drive.

The Policy Manager component of NetScreen-Global PRO Express (for up to 25 devices) is delivered on a Sun Netra X1 server with a 500 MHz processor, 512 MB RAM, and 40 GB IDE hard drive.

#### Windows server for console:

IBM-compatible PC running the Windows NT® Workstation/Server 4.0, Service Pack 6 or higher or Windows® 2000 Server, Advanced Server, or Professional editions.

- Minimum 400 MHz, recommended 700 MHz Pentium® II or equivalent
- Minimum 192 MB, recommended 256 MB RAM
- Ethernet adapter
- TCP/IP

## Ordering information:

Product	Part Number
<b>NetScreen-Global PRO</b>	
NetScreen-Global PRO, 25 device limit	NS-GP-25
NetScreen-Global PRO, 100 device limit	NS-GP-100
NetScreen-Global PRO, 200 device limit	NS-GP-200
NetScreen-Global PRO, 500 device limit	NS-GP-500
NetScreen-Global PRO, 1000 device limit	NS-GP-1000
NetScreen-Global PRO, each addtl. 1000 devices	NS-GP-UP1K
NetScreen-Global PRO Integration Module for Netcool	NS-GLP-IMN
<b>NetScreen-Global PRO Express</b>	
NetScreen-Global PRO Express, 100 device limit	NS-GPX-100
NetScreen-Global PRO Express, 25 device limit	NS-GPX-025

Please see [www.netscreen.com/products](http://www.netscreen.com/products) for the latest information and features of NetScreen's entire line of products.

### NetScreen product warranty and services

The standard hardware warranty is for a period of one year. The system software has a 90-day warranty that will meet published specifications. Optional hardware maintenance and software subscription services are also available. These services are recommended to ensure the system is kept updated with the latest software enhancements and to ensure high availability for end-users. Phone support services and training courses are also available from NetScreen.

For more information about NetScreen products, call toll-free 1-800-638-8296

